

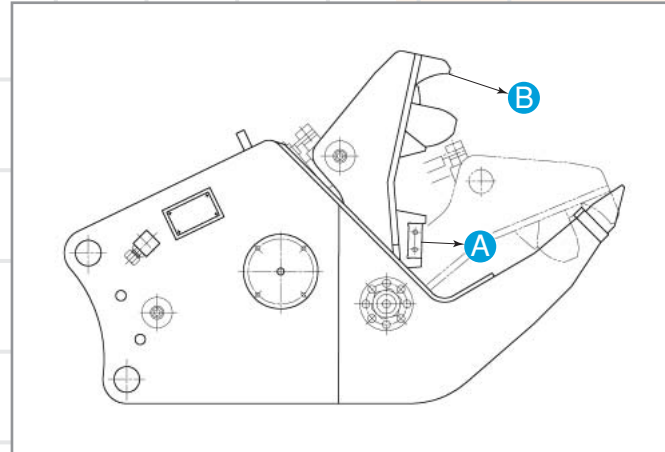
# Pulverizer

Performs the three rolls of size reducer, separator, and loading machine

- Low-noise, low-vibration design for urban works.
- Rehandling crushed concrete to further reduce capacity, produce aggregate, and sort resources.
- Cutter for reinforcement (standard on HSP35/HSP45), and (option on HSP80).
- Incorporated speed-increase valve increases opening/closing speeds for job efficiency.



## ● Dimensions ●



## ● Specifications ●

Applicable Models		ZAXIS70	ZAXIS120	ZAXIS200
Type		HSP35	HSP45	HSP80
Operating weight	kg	680	1 110	1 750
Overall length	mm	1 620	1 840	2 250
Overall width	mm	1 030	1 220	1 360
Max. opening	mm	600	710	840
Max. hydraulic pressure	MPa (kgf/cm <sup>2</sup> )	20.6 (210)	24.5 (250)	31.4 (320)
Max. crushing force	kN (tf)			
A		814 (82)	1 000 (107)	1 785 (185)
B		245 (25)	343 (35)	588 (60)
Reinforcement cutter		Standard	Standard	Option
Cylinder cover		Standard	Standard	Standard

<Note> Data shown above are in SI units, followed by data in conventional units in ( ).